

## Images of RS5 (Bone-scraping) residues

### used in Blind Test 1

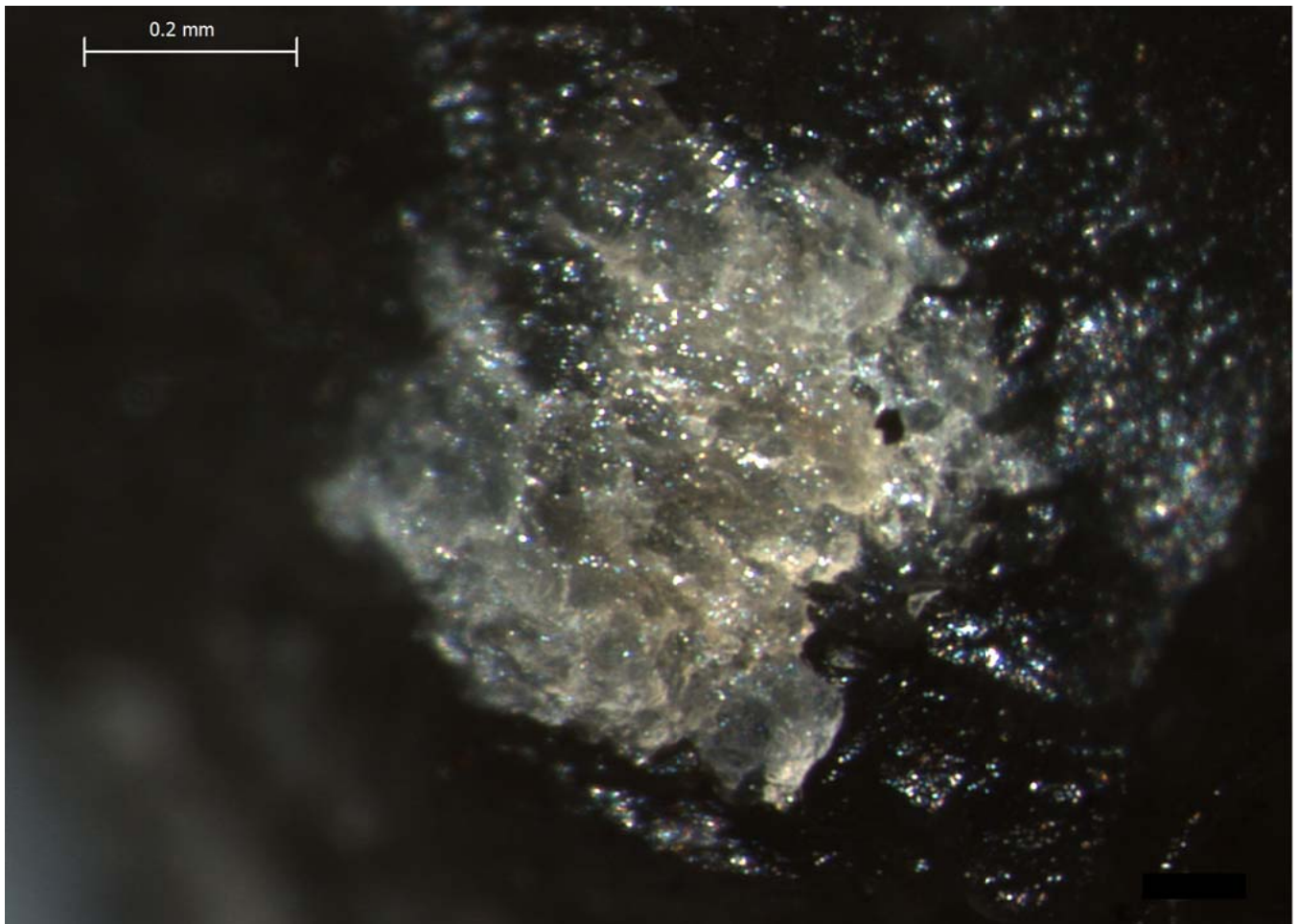
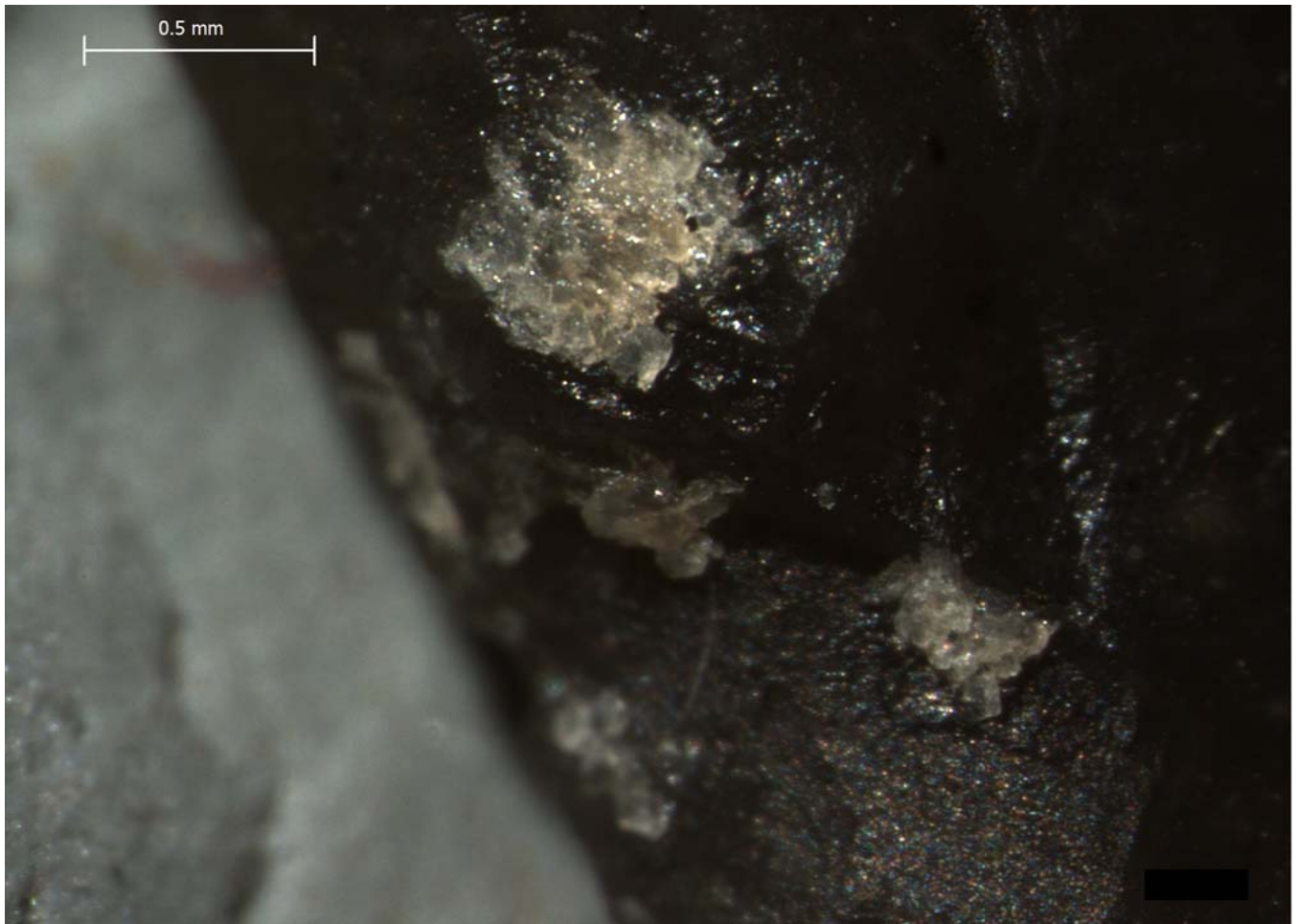
The images published in this pdf are those that were used in the testing portion of the experiment reported in Monnier et al. 2012, *J. Arch. Sci.* For questions, please contact Gilliane Monnier at [monni003@umn.edu](mailto:monni003@umn.edu).

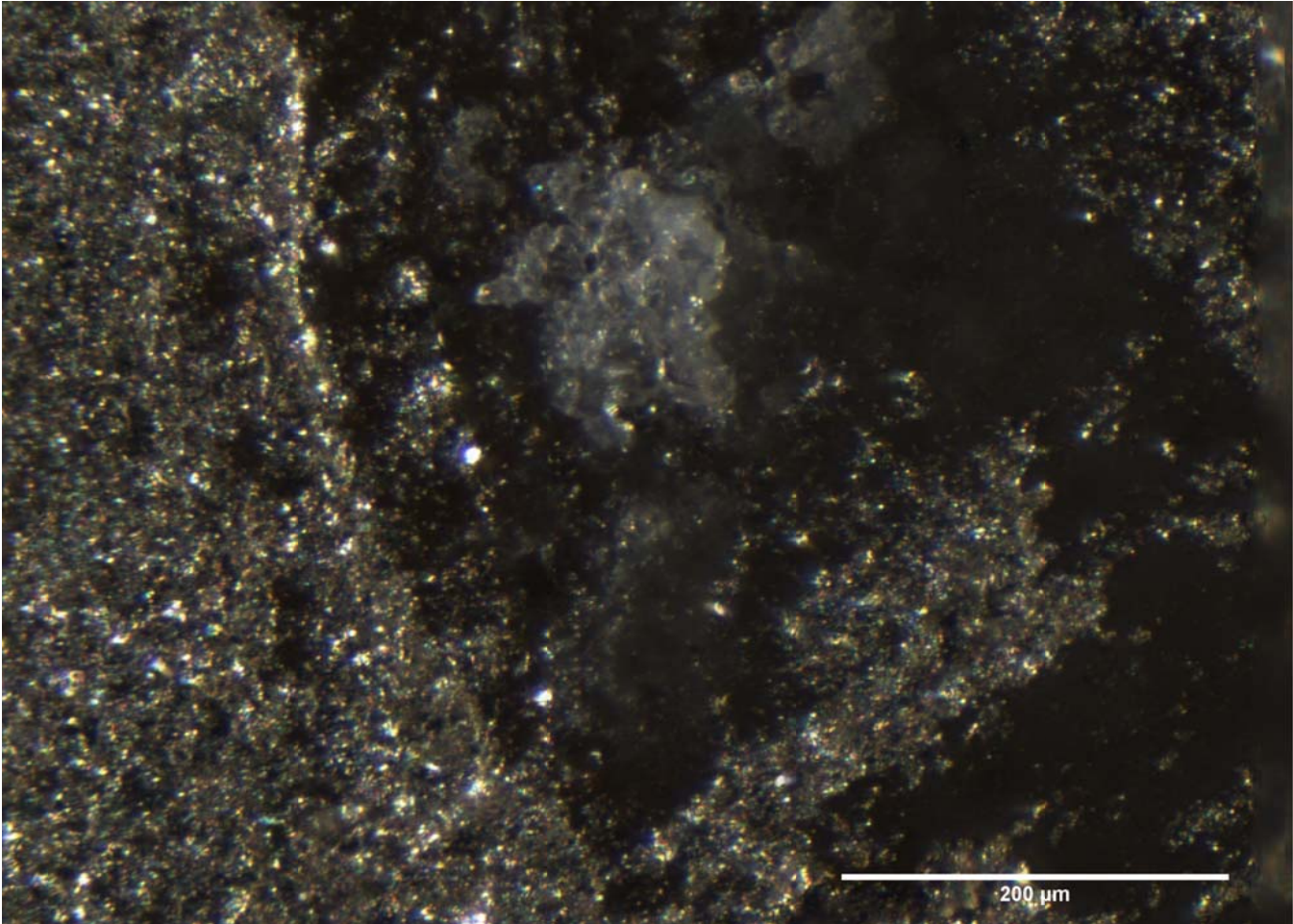
Naming conventions: 'RS' = Residue Study; 'D' = Dorsal side; 'V' = Ventral side; 'a', 'b', etc. = residue number.

For example, "3Db" refers to tool RS3, residue "b" on the dorsal surface.

Blind Test 1

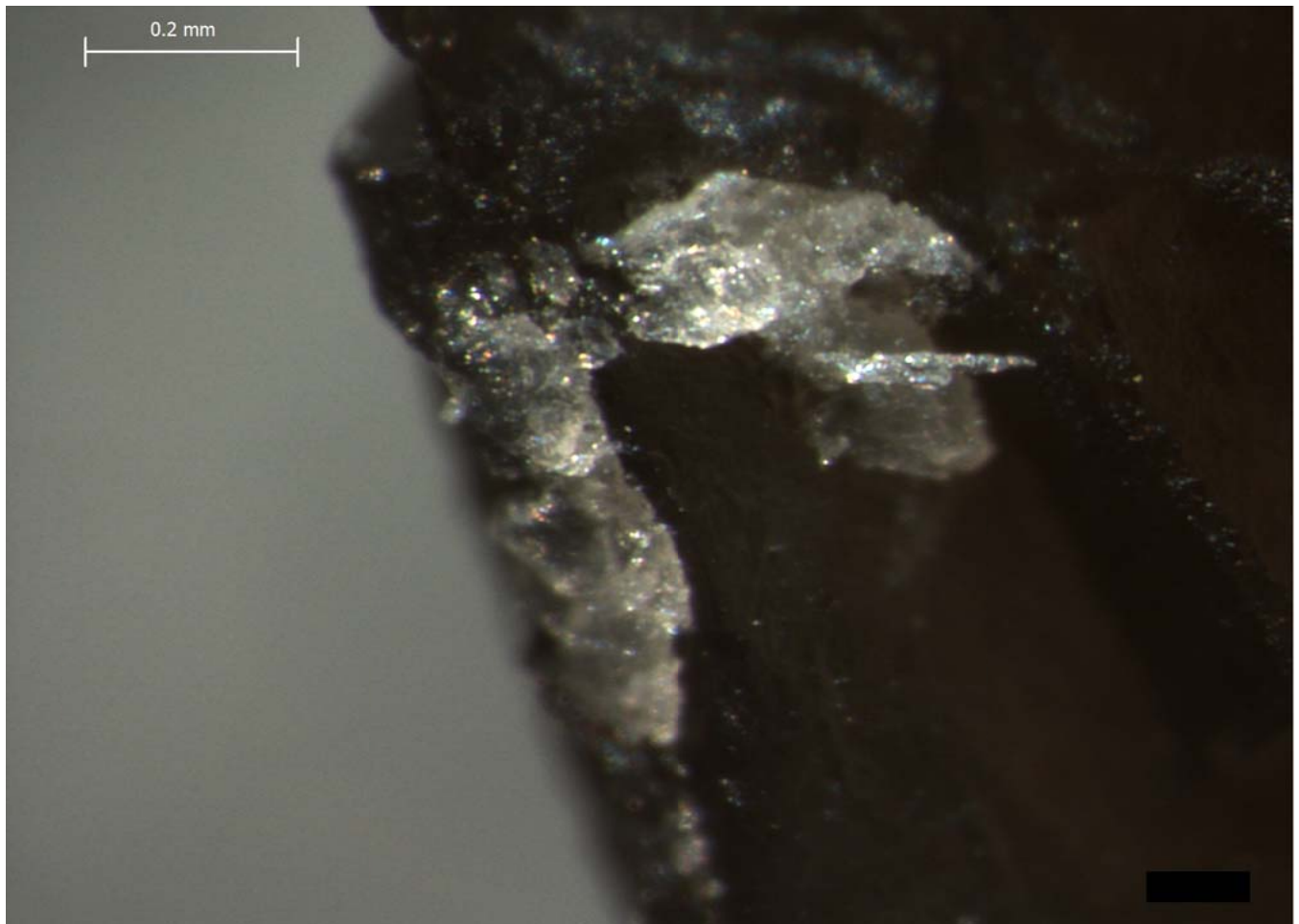
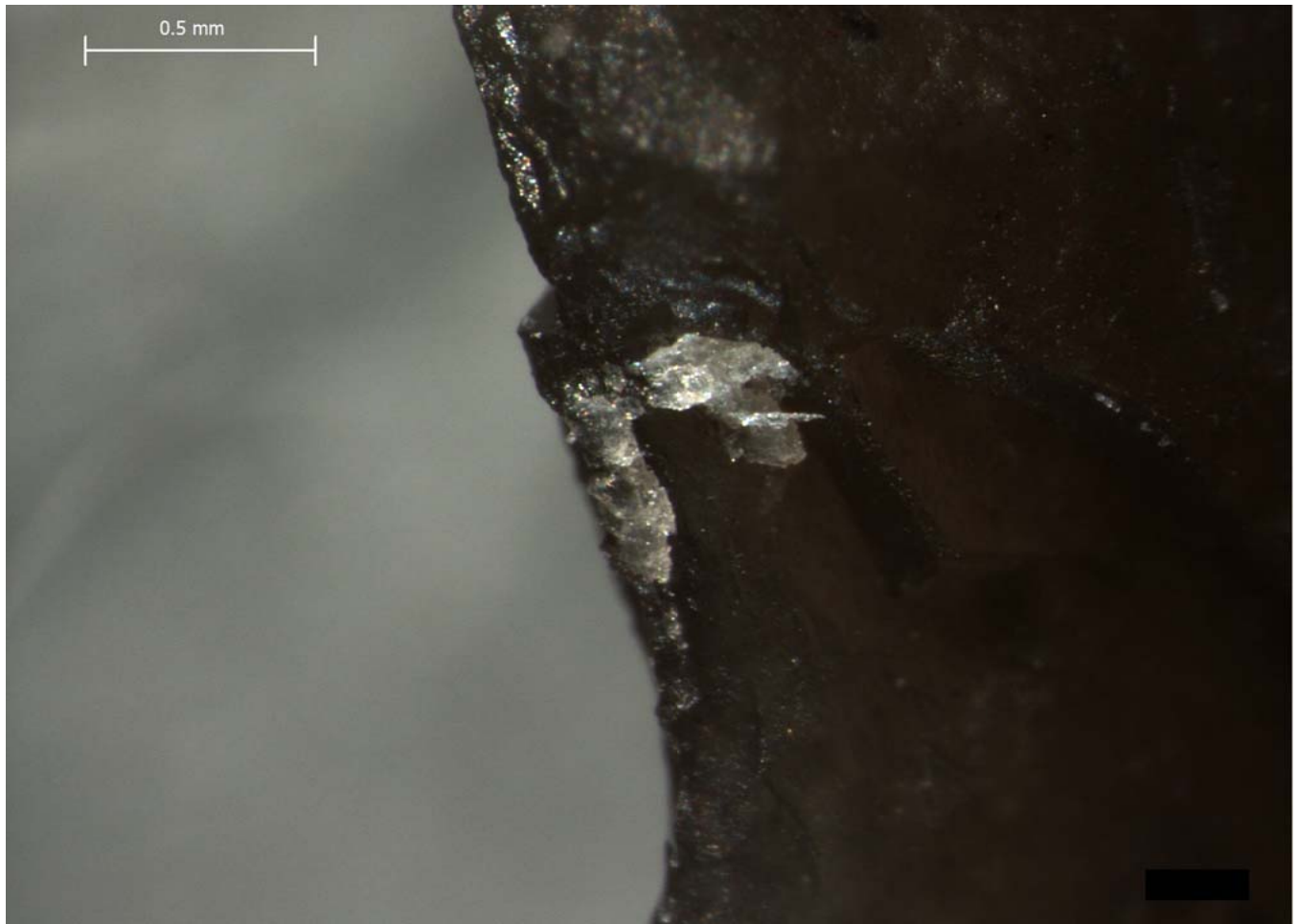
Residue 5Da





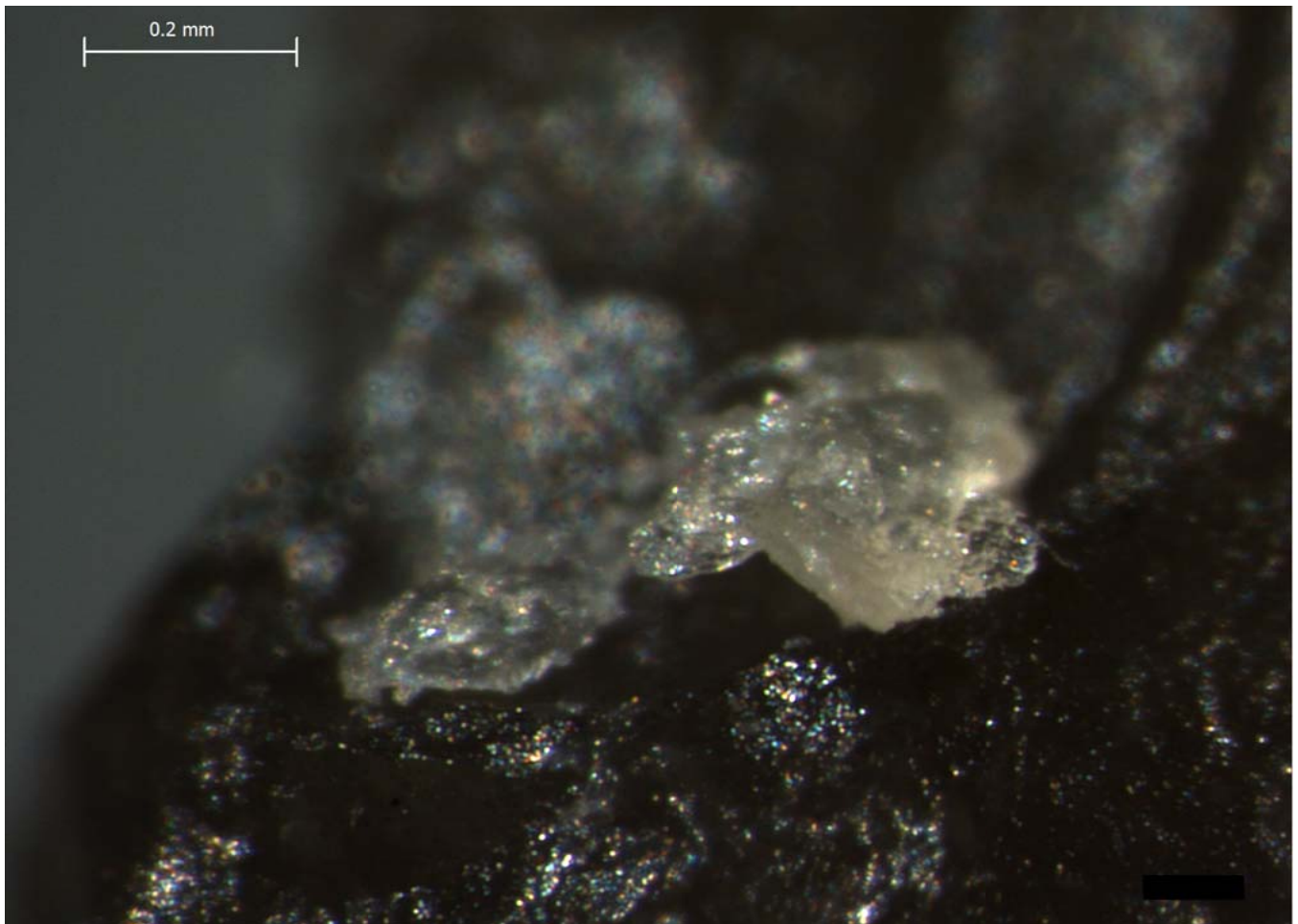
Blind Test 1

Residue 5Db



Blind Test 1

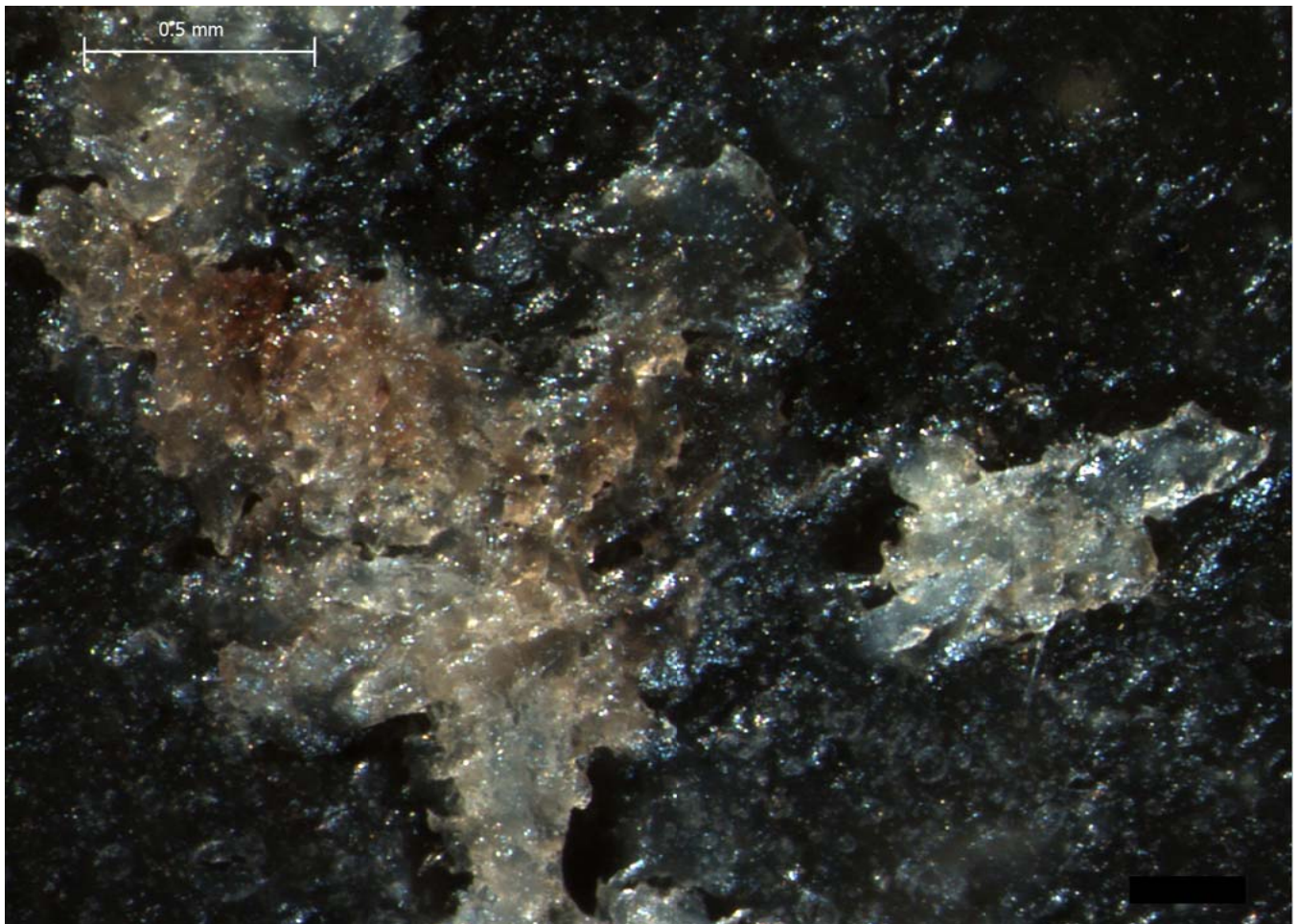
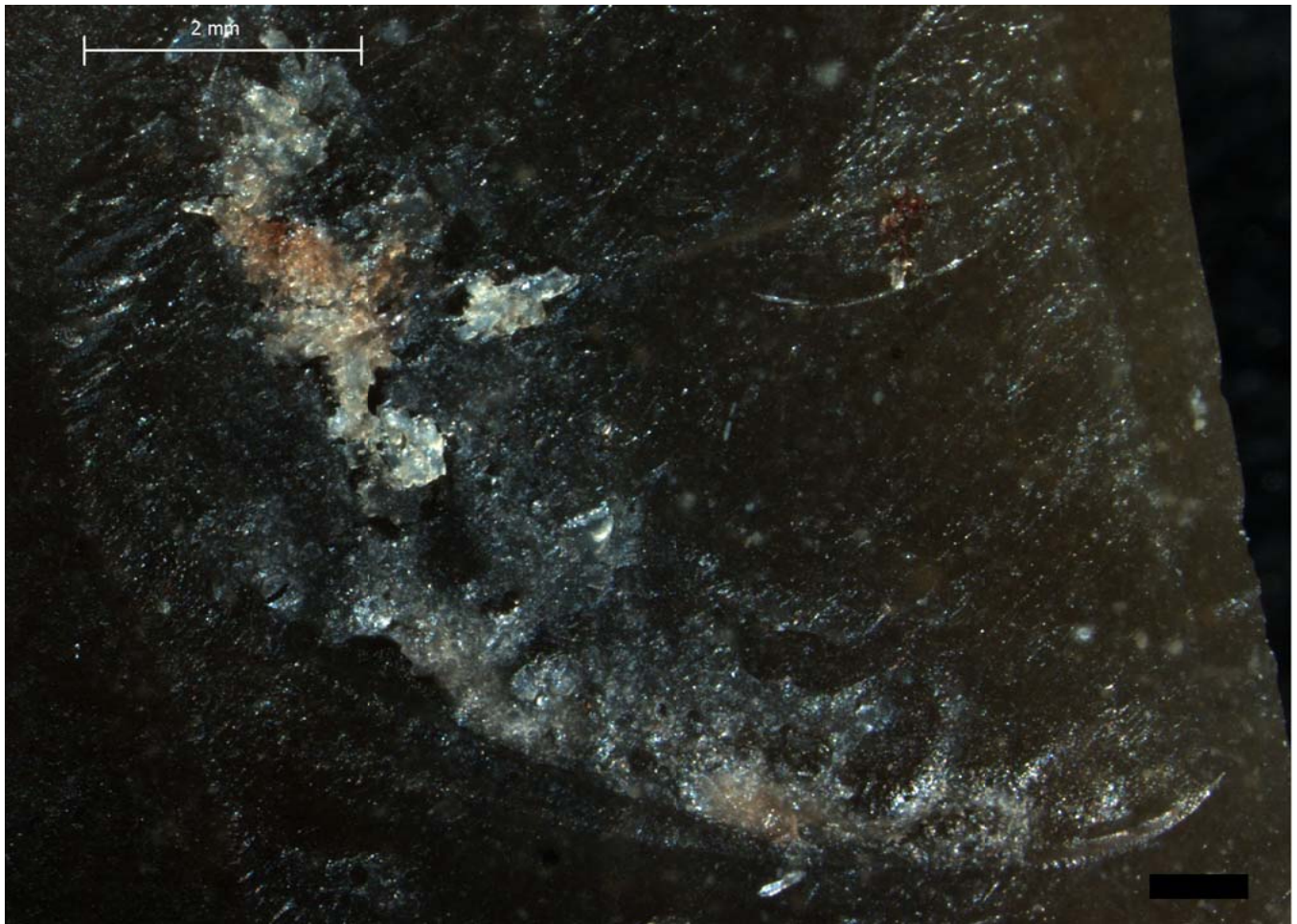
Residue 5Dc

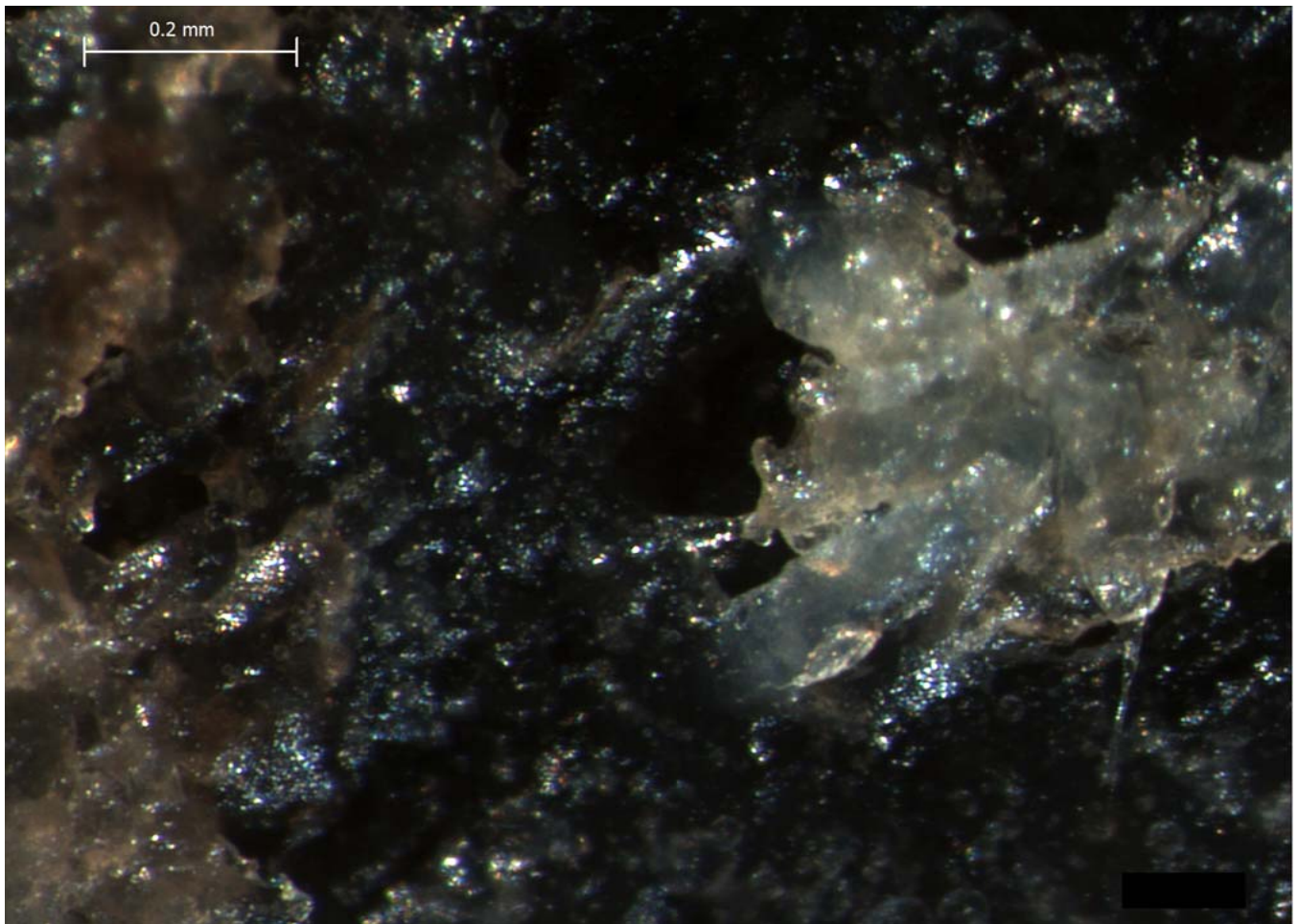
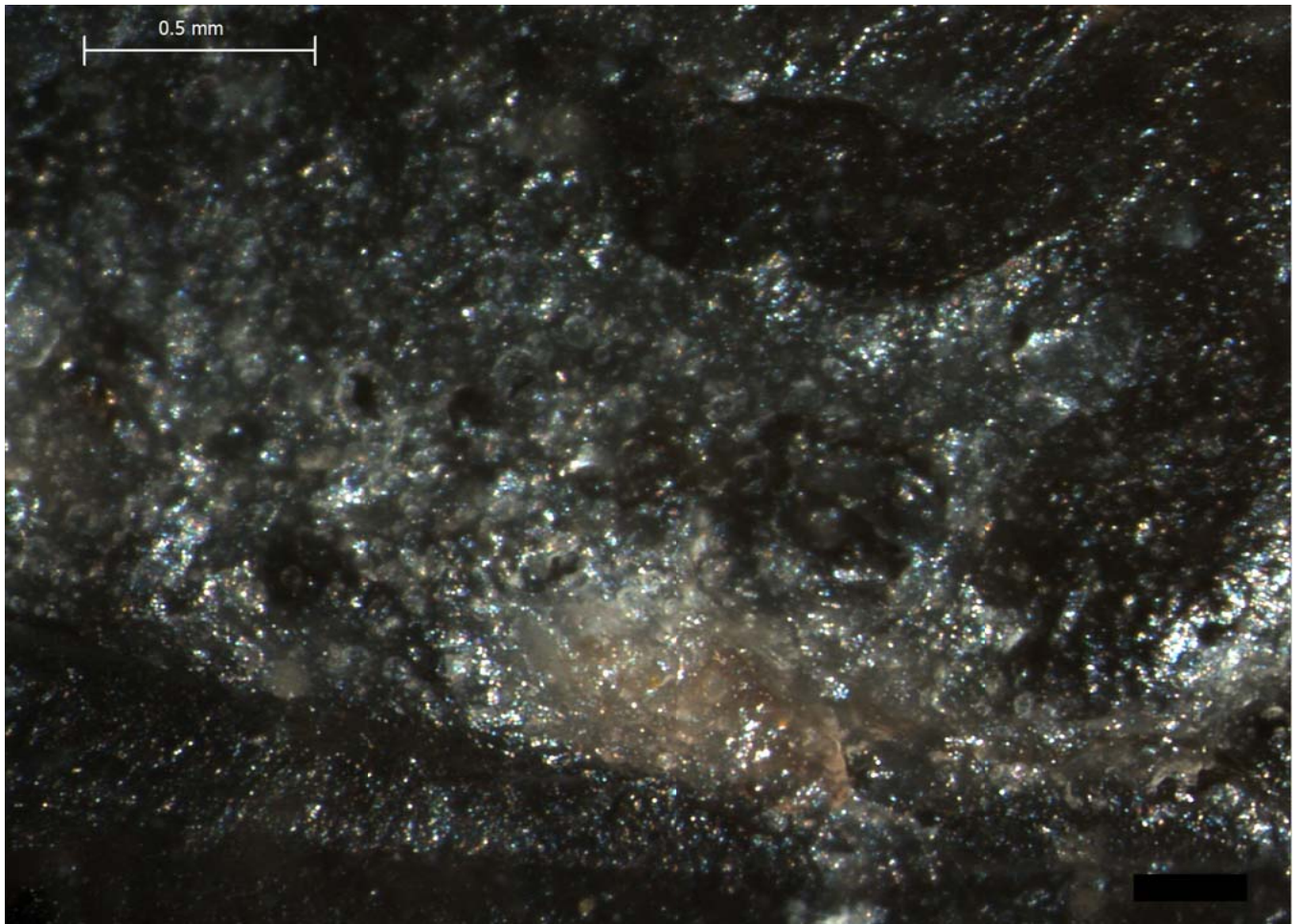


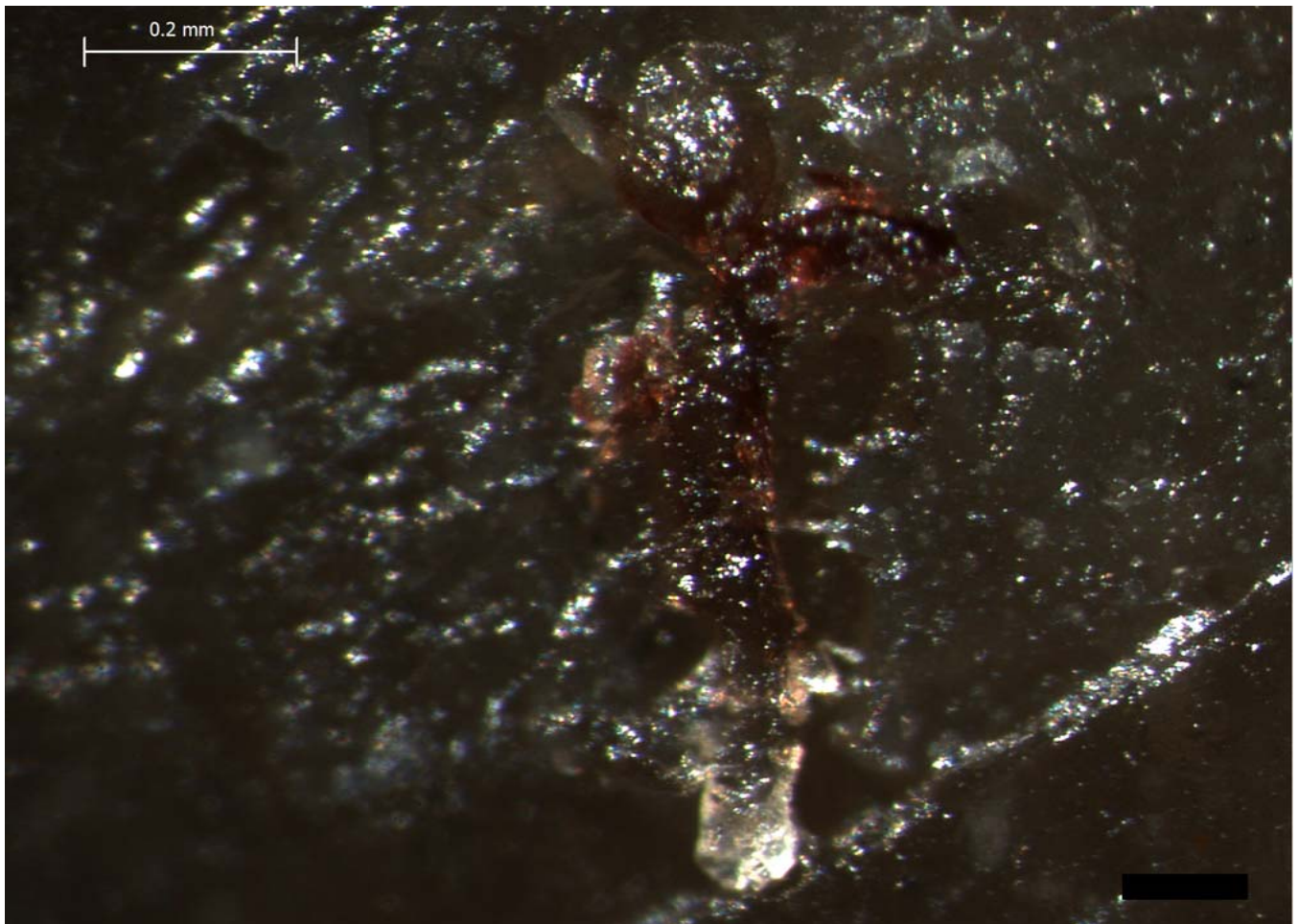
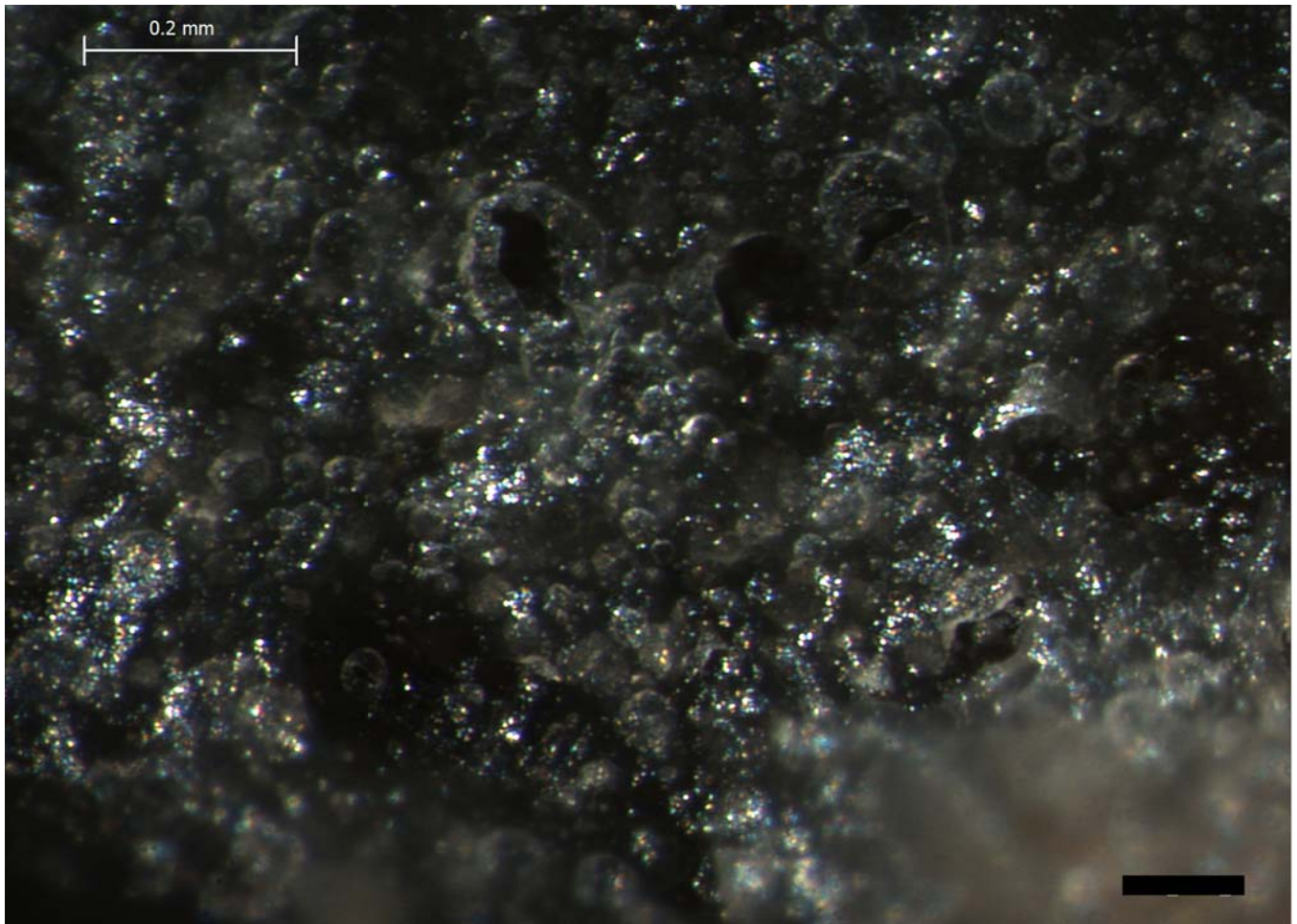


Blind Test 1

Residue 5Dd



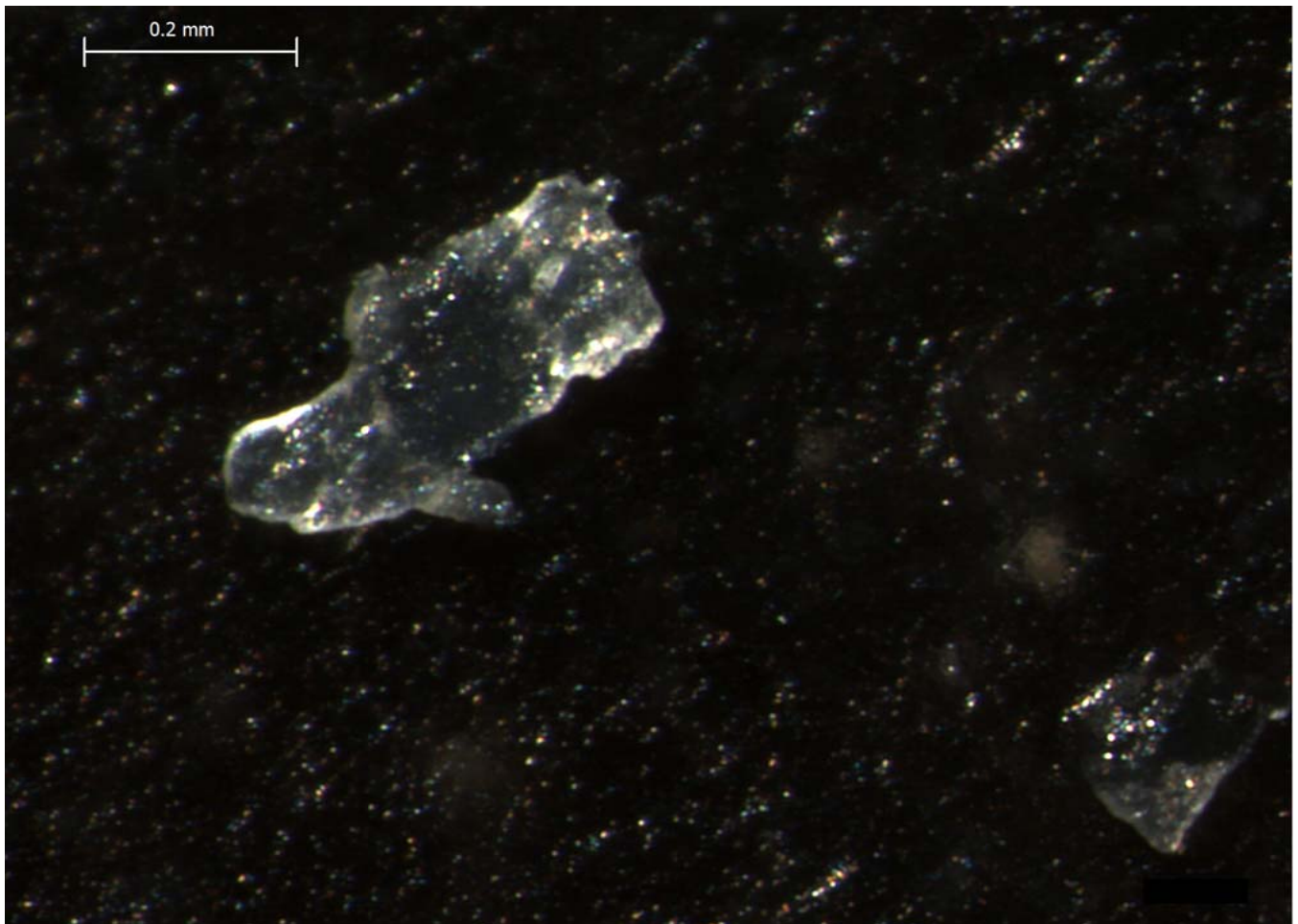
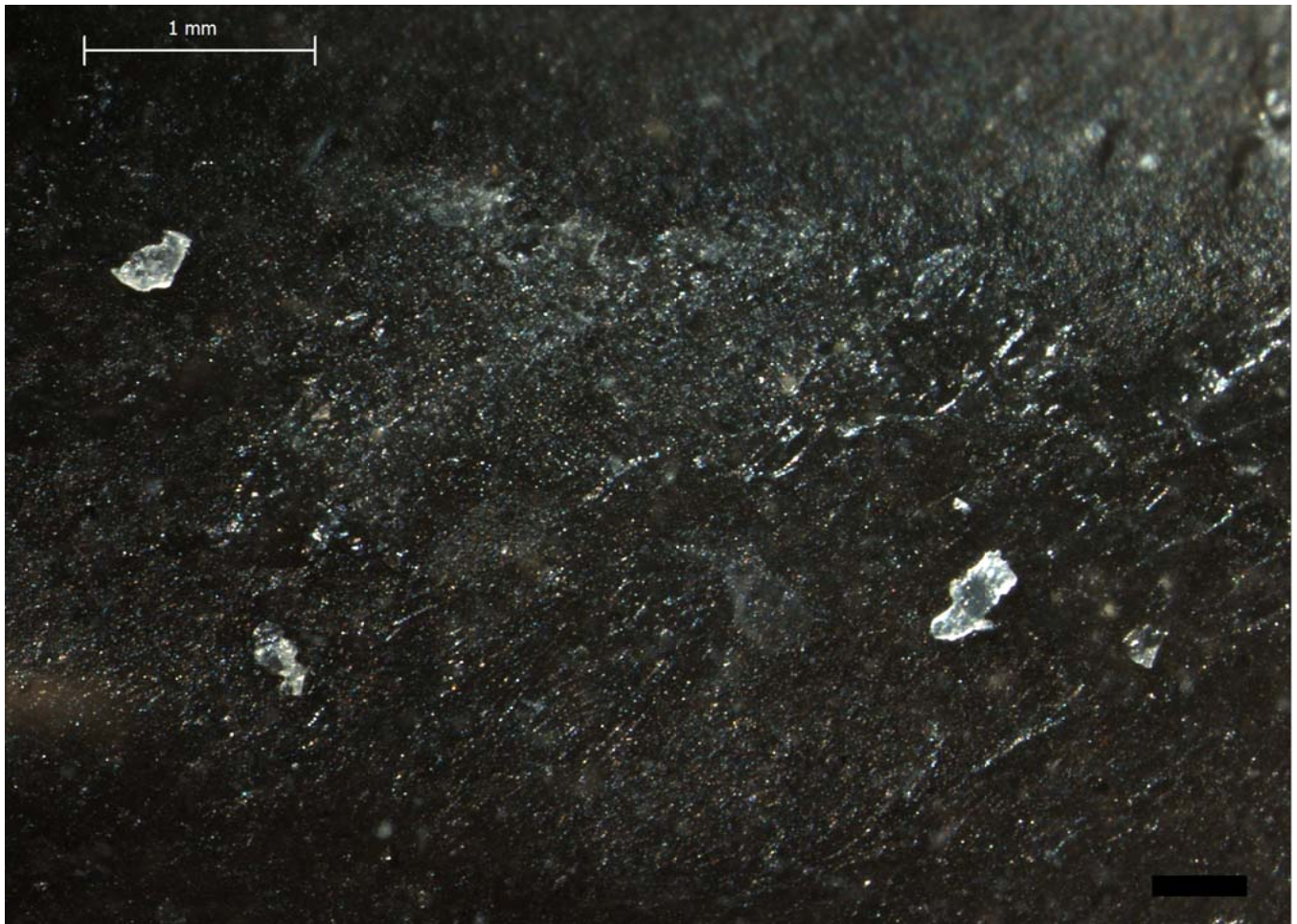






Blind Test 1

Residue 5De

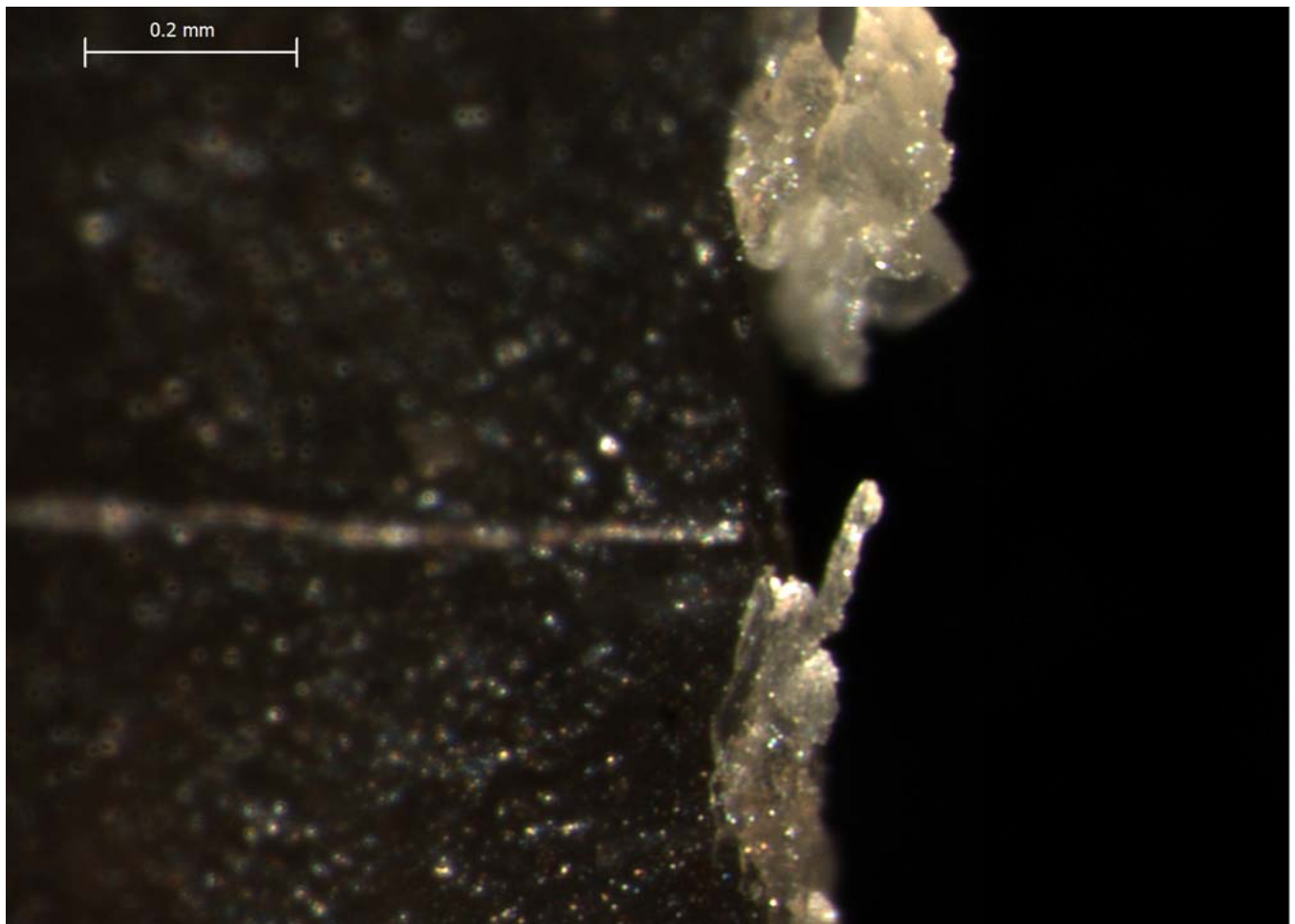






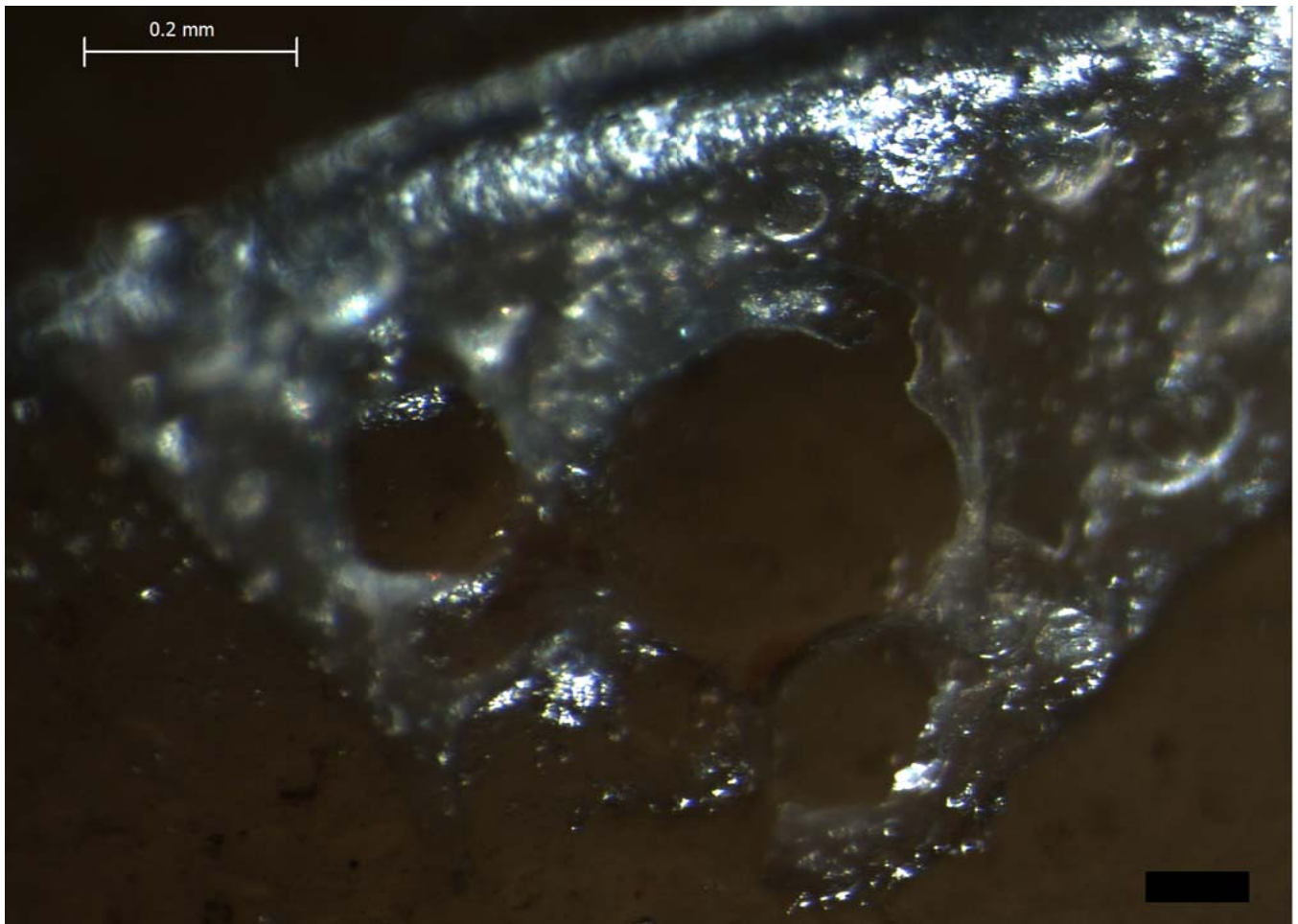
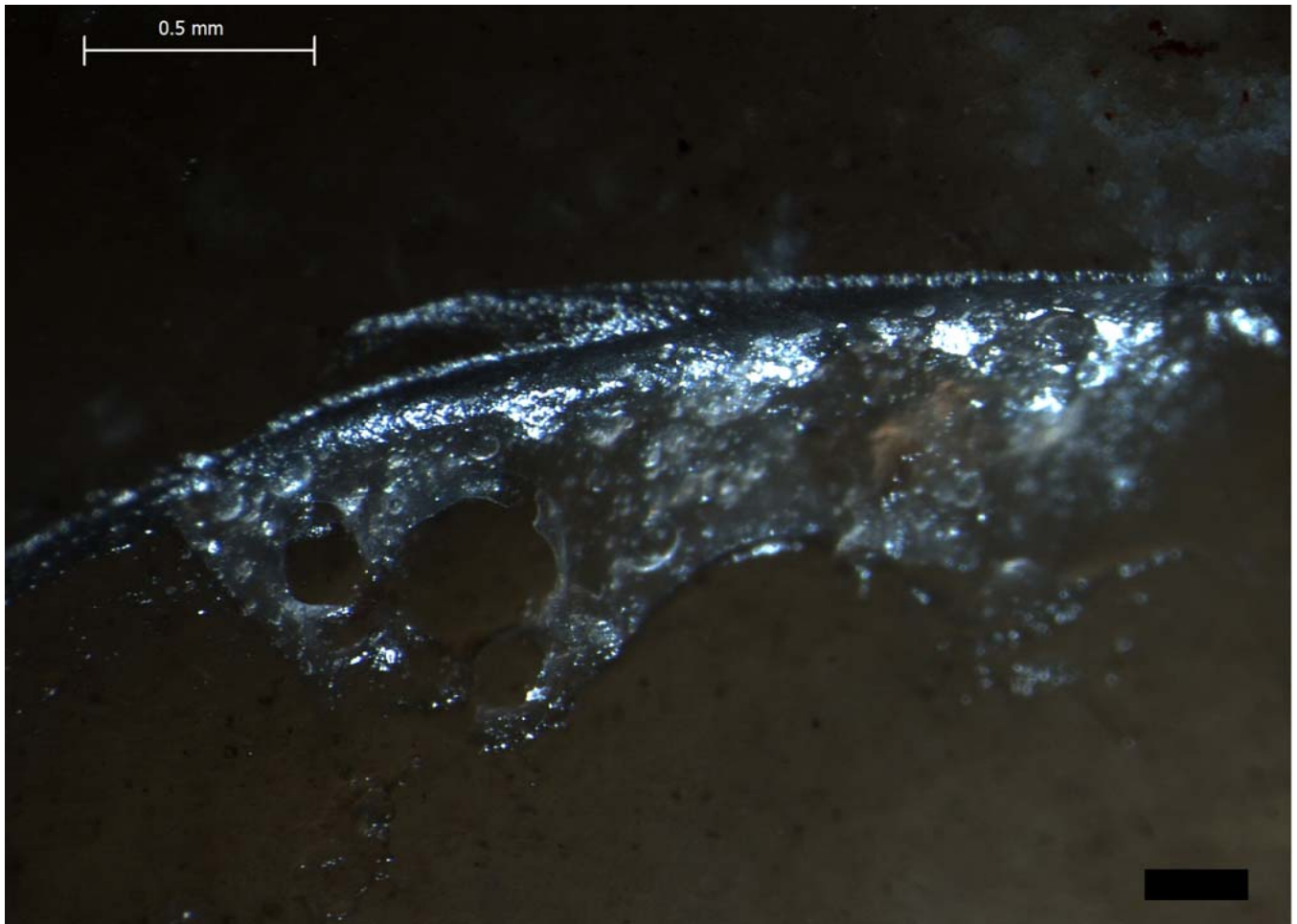
Blind Test 1

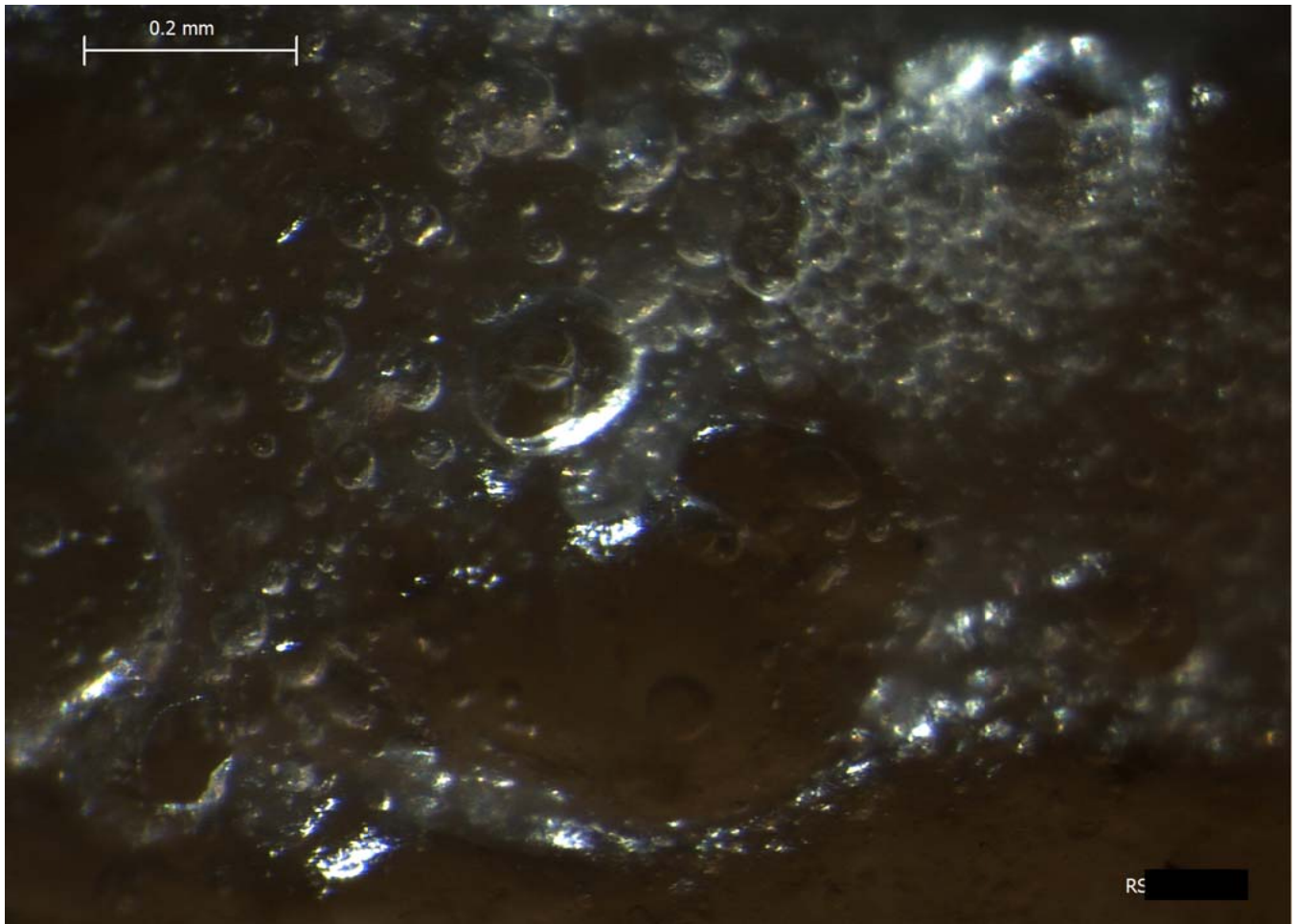
Residue 5Va



Blind Test 1

Residue 5Vb

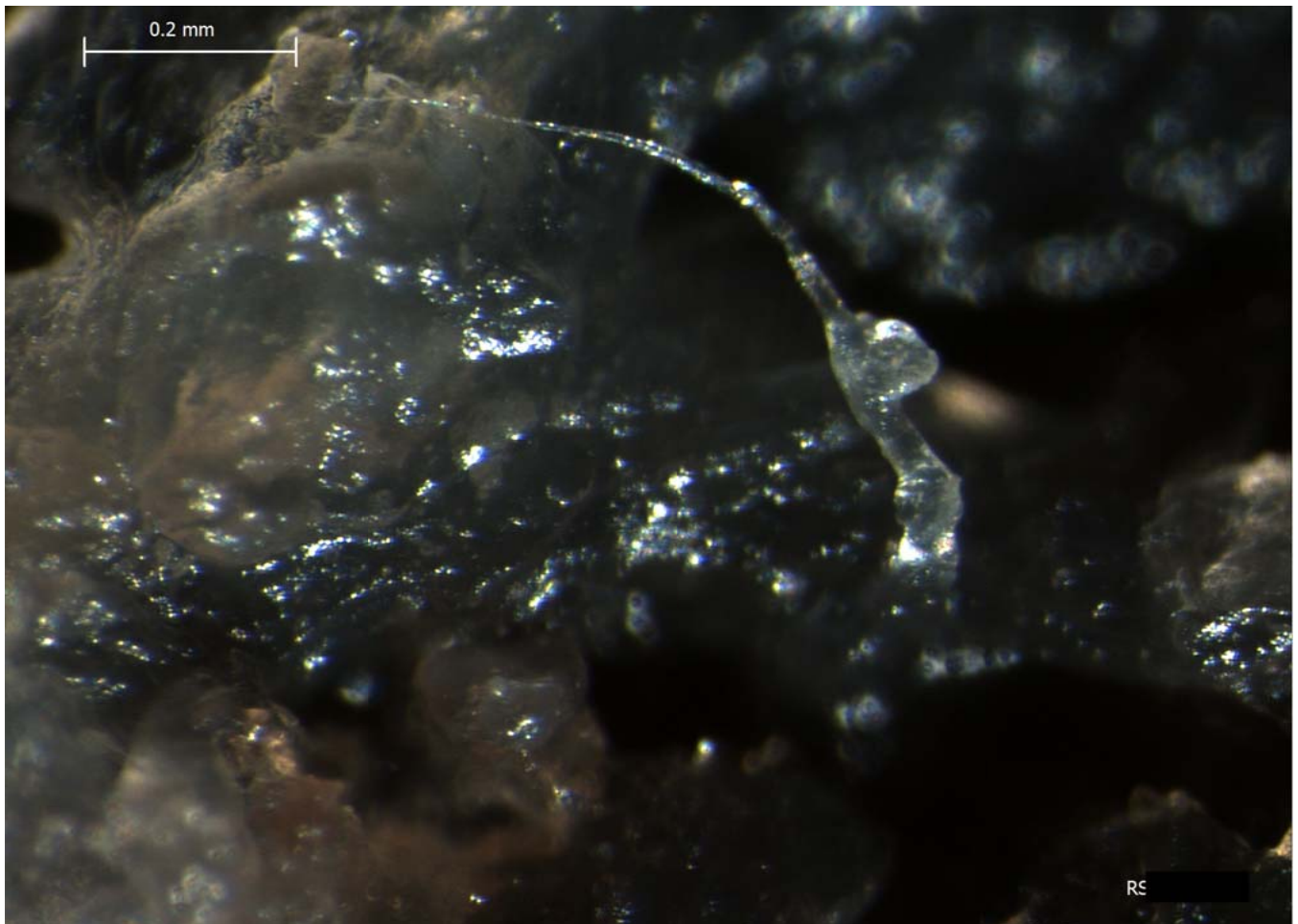
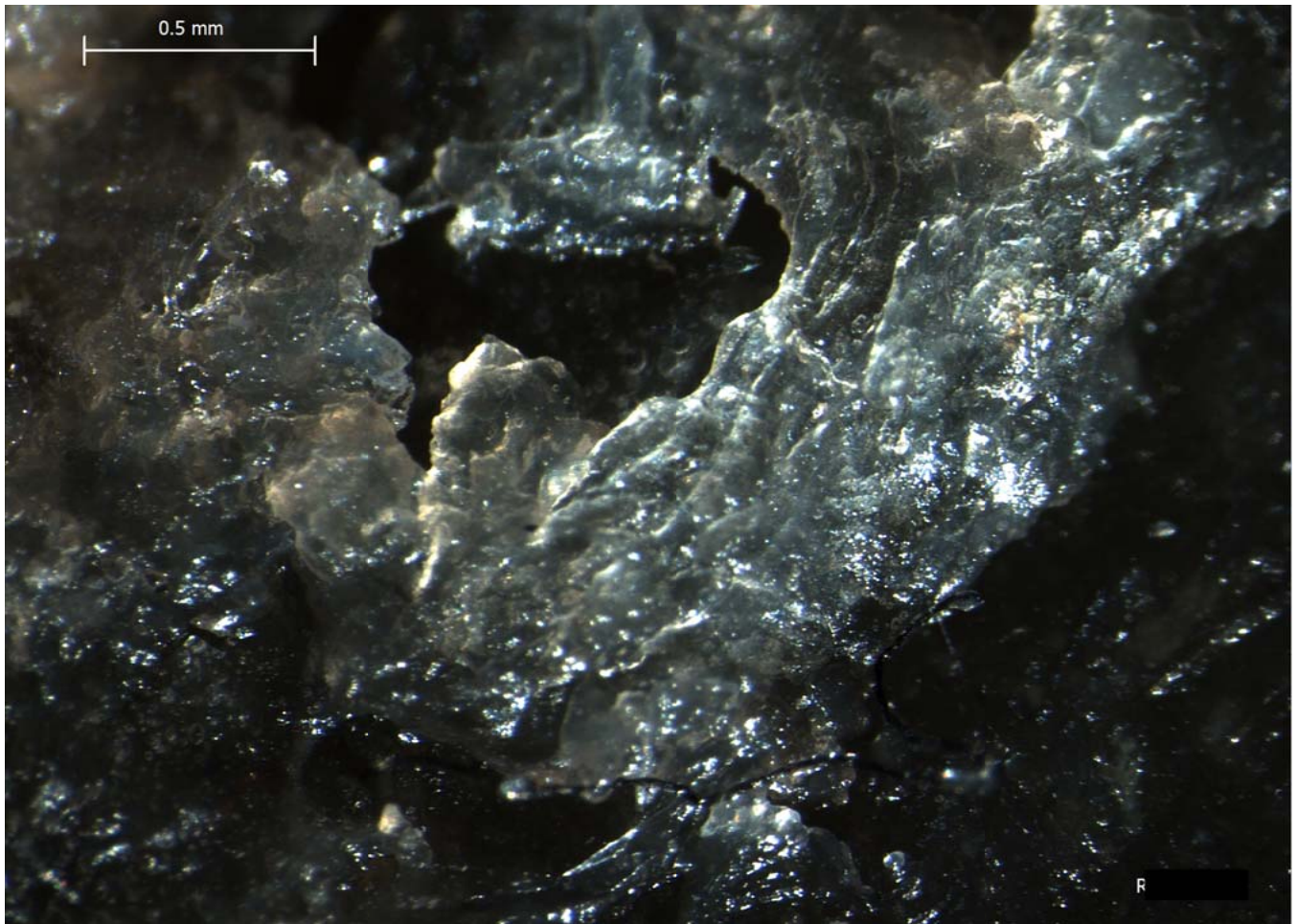




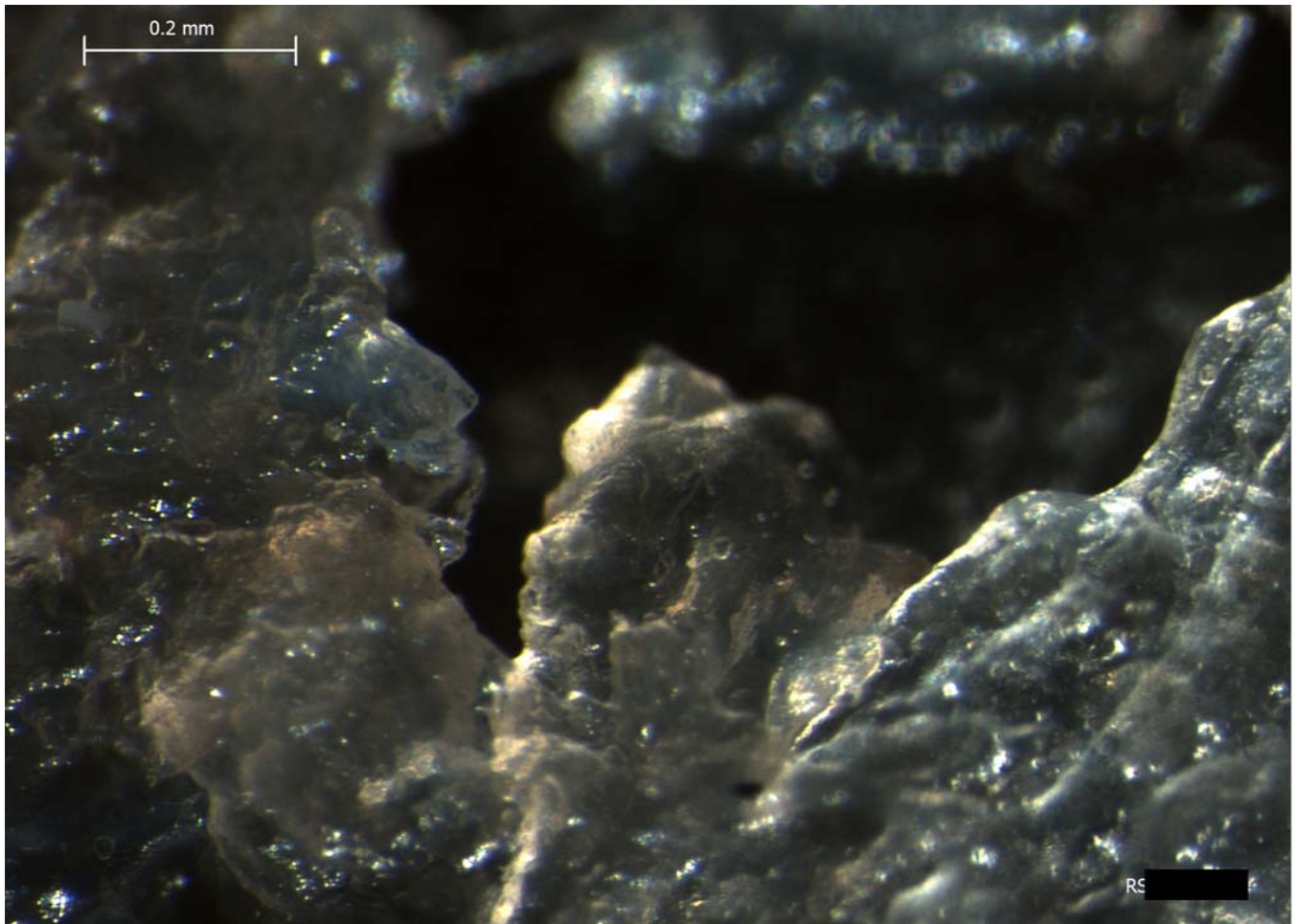
Blind Test 1

Residue 5Vc



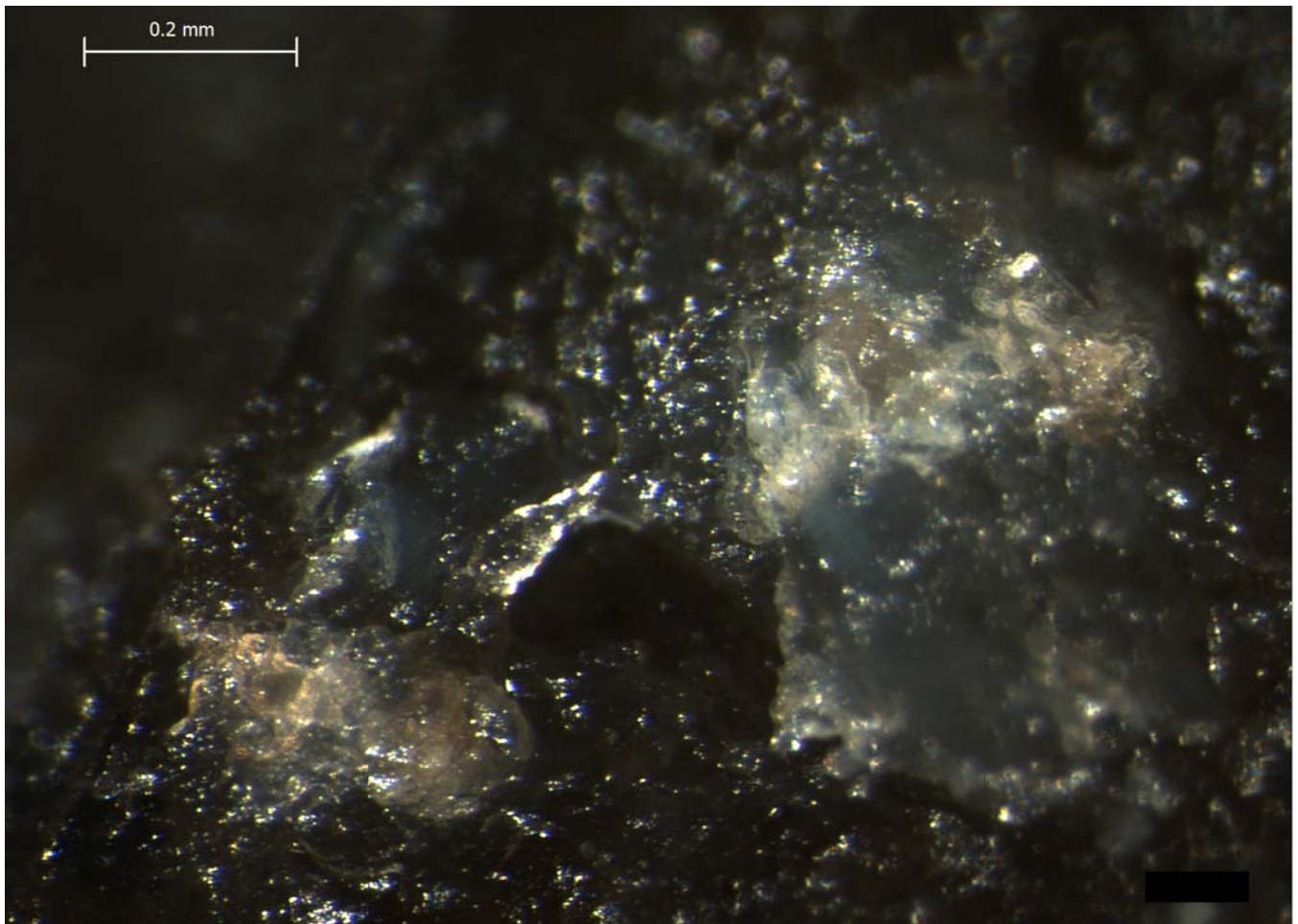
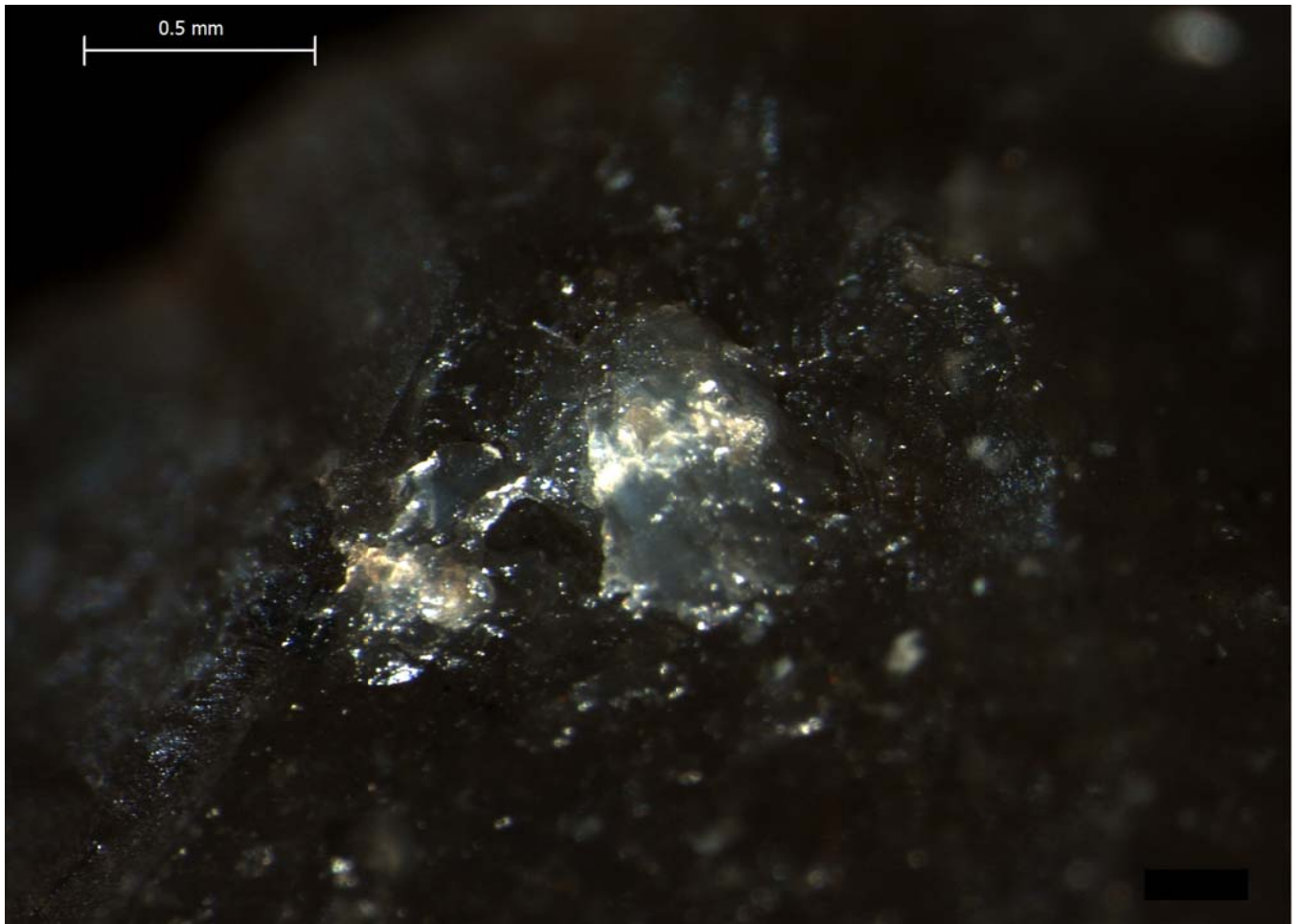






Blind Test 1

Residue 5Vd



Blind Test 1

Residue 5Ve

